

FINN-STRAIGHT STAIRS

STRUCTURE

SIDE BEAMS

The side beams are made from the following C profiles:

C-160x35x24, C-160x50x34, C-180x50x24

The measure of the side beam is determined according to the width and run of the stairs.

TREADS

Straight stairs are delivered equipped with the following tread models:

1. Grating tread

The standard treads are model Finn, in which the bearing and transverse bar mesh is 33x75 mm. Treads are also made from other grating and tread models included in our manufacturing programme.

2. Sheet tread

The tread may be equipped with carpet embedding.

3. Chequered sheet tread

4. Tear sheet tread

The treads are equipped with a higher back edge plate, if required.

EXIT LEVELS / RESTING LEVELS

The levels are manufactured of the same material as the treads.

RAILING

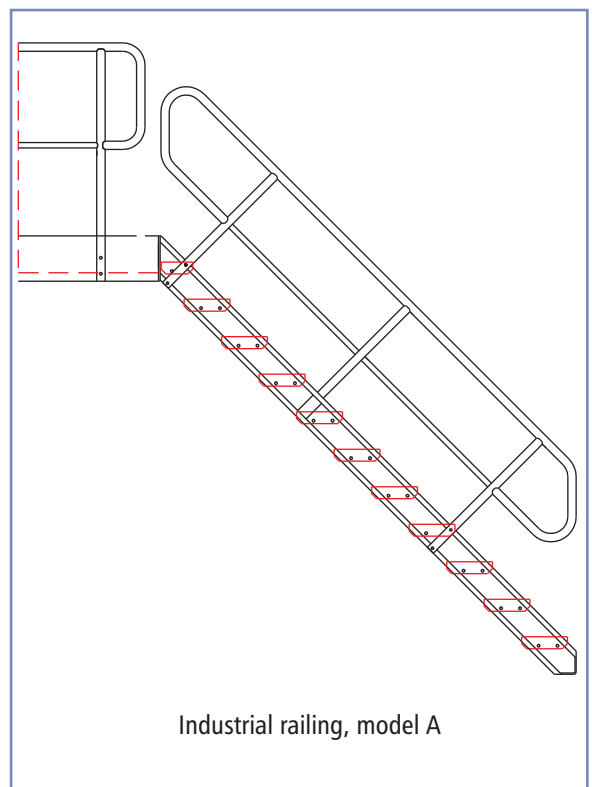
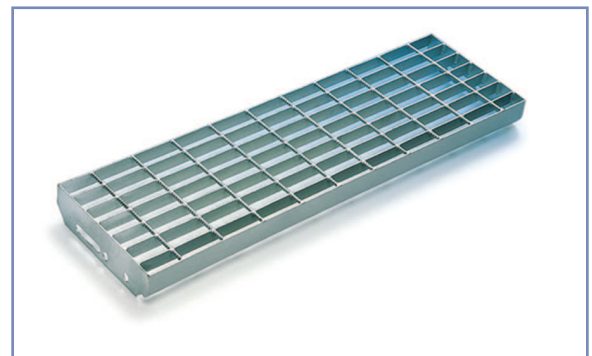
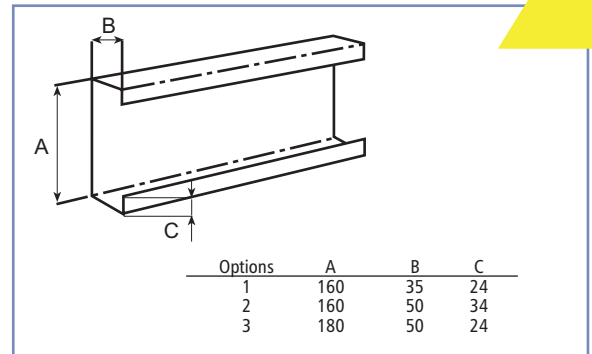
The standard rails are element structures made from a steel tube, fastened to side beams by screw joints. The rails can also be welded on the side beam before surface treatment. On request we also manufacture wall railings. Standard delivery railing models are available in three options:

1. Industrial railing, model A

o HANDRAIL is made from \varnothing 33.7 mm tube.

o INTERMEDIATE RAIL is made from \varnothing 26.9 mm tube.

o VERTICAL POSTS are made from \varnothing 33.7 mm tube.



FINN-STRAIGHT STAIRS

2. Industrial railing, model B

- o HANDRAIL is made from \varnothing 42.4 mm tube.
- o INTERMEDIATE RAIL is made from \varnothing 33.7 mm tube.
- o VERTICAL POSTS are made from \varnothing 42.4 mm tube.

3. Safety railing, model C

- o HANDRAIL is made from \varnothing 33.7 mm tube.
- o INTERMEDIATE RAIL is made from \varnothing 26.9 mm tube.
- o VERTICAL POSTS are made from \varnothing 33.7 mm tube
- *INTERMEDIATE SPOKES are made from \varnothing 12 mm round steel, spoke distance is < 100 mm
- *RAILING HEIGHT 1100 mm.

4. Special railings

On request we also produce special railings.

STEEL GRADES

Structural steels:	EN 10025 S235
	EN 10025 S355
Stainless steel	EN 1.4301
Acid-proof steel	EN 1.4432

SURFACE TREATMENT

All the steel structures are hot-dip galvanised. The products are also available primed or ready-painted, if required. The stainless and acid-proof steels are stained.

